



## myWorld in Numbers

---

**Introduction** This guide discusses myWorld in Numbers. It explains this feature's background, purpose, and application in myWorld Geography.

---

**Background** Often, numbers, data, and statistics are concepts that are too abstract and complex for middle grade students to comprehend. Yet, this information is a critical part of student learning. To address this issue, the authors of myWorld Geography created myWorld in Numbers. myWorld in Numbers helps students connect to the Essential Questions in the program and to their world. It presents the information in a way that students can easily understand.

In order to help students connect to numbers, data, and statistics, Pearson modeled myWorld in Numbers after David Smith's book *If the World Were a Village*. In his book, Smith helps children understand large statistical numbers by collapsing the world's population of 6.2 billion down to a village of 100. By exploring the lives of the 100 villagers, children discover that life in other nations is often very different from their own.



This basic representation of statistics used in his book encourages children to embrace the bigger picture and helps them understand and establish their own place in the global village.

---

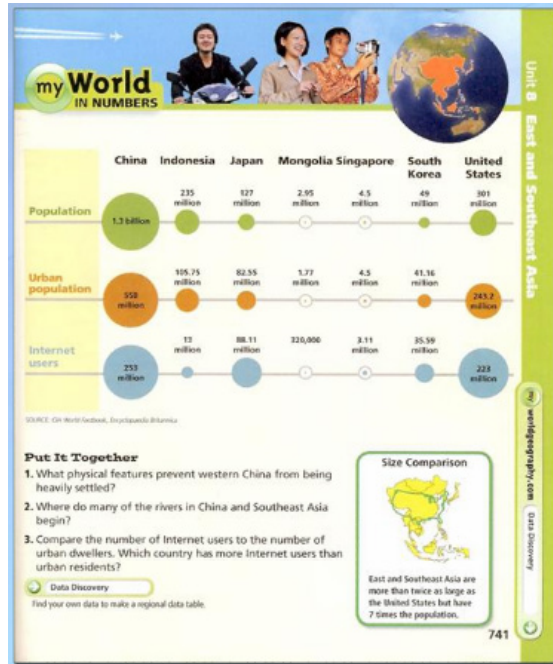
**Purpose** David Smith's simple explanation of the world's data and statistics can be found in myWorld in Numbers. These basic explanations related to world geography help students connect to important data and statistics of the specific region they are studying. Within a customized myWorld Geography curriculum, this feature will also connect to data specific to a state.

## Application

Here are some examples of how to use myWorld in Numbers.

### Unit Regional Overview

myWorld in Numbers can be found in each Unit Regional Overview in the student edition. myWorld in Numbers provides information specific to the region students will study in the unit.



### Guide on the Side

The Guide on the Side in the ProGuide provides guidance for teachers in helping students analyze the visuals and charts in myWorld Geography. For example, in the South America unit, direct students' attention to the graphs and begin a discussion by asking them questions about the ethnic composition of different countries in South America.

**GUIDE ON THE SIDE**

**myWorld in Numbers**

**Analyze Visuals** Direct students' attention to the graphs. Begin a discussion by asking them questions about the ethnic composition of different countries in South America.

- Which country has the highest percentage of Native Americans? (Bolivia)
- Which country has the highest percentage of Europeans? (Argentina)
- Which country has the highest percentage of people who are either mixed European and African or European? (Brazil)
- Which country has the highest percentage of people who are mixed European and Native American? (Colombia)

**Data Discovery**

Students can practice data analysis skills online with the Data Discovery features on South America.

---

## Online Data Discovery

Students can practice with concepts they learn in myWorld in Numbers on myworldgeography.com. Online, students practice both data analysis as well as chart and graph skills using the Data Discovery feature of the program. For more information about this feature, please look for the Experience: Student Activities tutorial on this Web site.



---

## Student Edition Chapters

Each chapter in the student edition incorporates myWorld in Numbers where appropriate. For example, in the chapter on Brazil, myWorld in Numbers connects to the topic People in Brazil. Students need to understand how large the population in Brazil is in relationship to their world. myWorld in Numbers states that 3 people in the world out of 100 would live in Brazil. The information is represented in numbers that the students can easily comprehend.



---

## Review

This guide discussed the background and purpose of myWorld in Numbers. It provided the application of this feature in myWorld Geography. myWorld in Numbers uses basic numbers, data, and statistics to help students relate to and learn about their world.

For more information about myWorld Geography, please watch the other tutorials on this Web site.