

About MindPoint Quiz Show

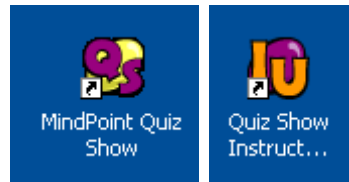
Tutorial Guide: MindPoint Quiz Show Getting Started

This guide explains how to launch the software for **MindPoint Quiz Show**, create a class, and add students. MindPoint Quiz Show is an interactive assessment tool that comes with many Pearson products.

First-Time Launch

After you install the software using the installation CD-ROM, you will see two icons on your desktop:

- MindPoint Quiz Show
- Quiz Show Instructor Utilities

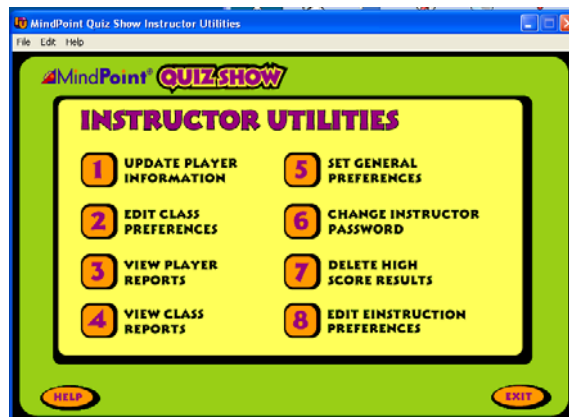


After you install the program, double-click the Quiz Show Instructor Utilities icon.

Create a Class

To create a new class:

1. Click **Edit Class Preferences** (#2).

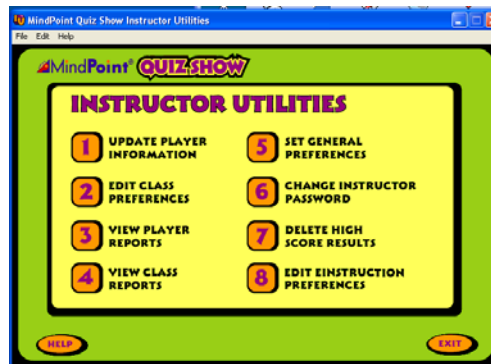


2. Click **New**.
3. Type a **Class Name**.
4. You can change your general and game preferences as well as special effects, or you may leave the default settings.
5. Click **Save** after you have made your adjustments, then click **Done**.
6. Continue until all of your classes have been added.

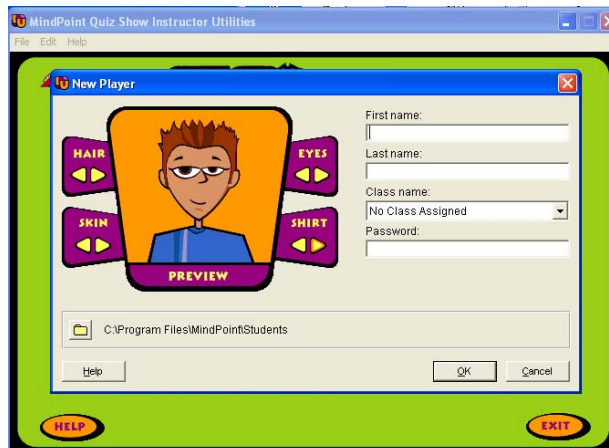
Add Students

To add a student:

1. Click **Update Player Information** (#1).



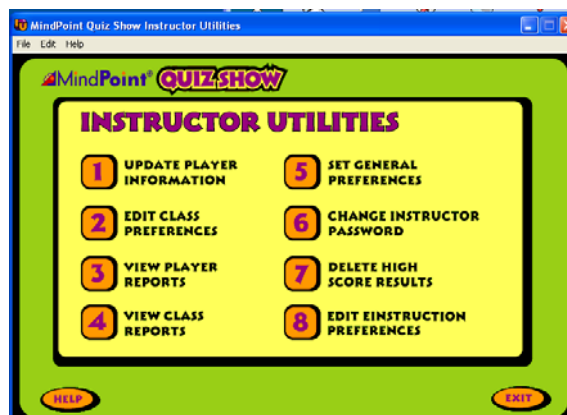
2. Click **New**.
3. Type the first and last name of a student in your class.
4. Choose a **Class Name** from the drop-down menu.
5. Create a password for the student.
6. You may also use the left and right arrow buttons to customize the appearance of a player's eyes, hair, skin, and shirt.
7. Click **OK** when you are done entering the student's information.
8. Continue until all of the students in your classes have been added.



Edit Class Preferences

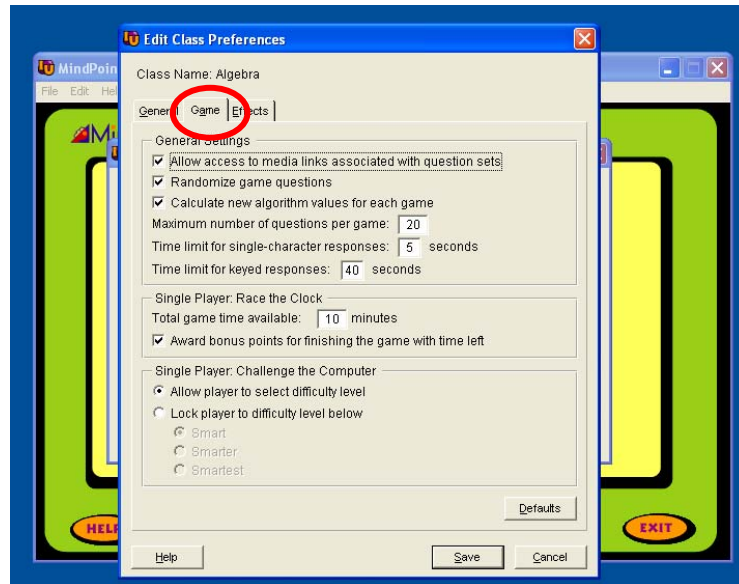
To edit your preferences:

1. Click **Edit Class Preferences** (#2).



2. Select your class and click **Edit**.
3. Click the **Game** tab.
4. You may want to limit the number of questions for each game, set time limits, and/or change the effects.

Learn More



Please watch the tutorial and read the other guide available on this Web site.