



Navigating MyScienceOnline.com

Introduction

This guide discusses MyScienceOnline.com, the digital path for Interactive Science.

First, this guide explains how to navigate and assign digital content to students. Next, it examines the ways to search for appropriate digital media for the lessons teachers are teaching. Finally, it shows how to view the assignments that teachers have created for their students.

Before You Begin

To find a program's digital content, go to MyScienceOnline.com and click the log-in screen.



Before using this content, teachers will need to register their Interactive Science products and set up their classes and student accounts.

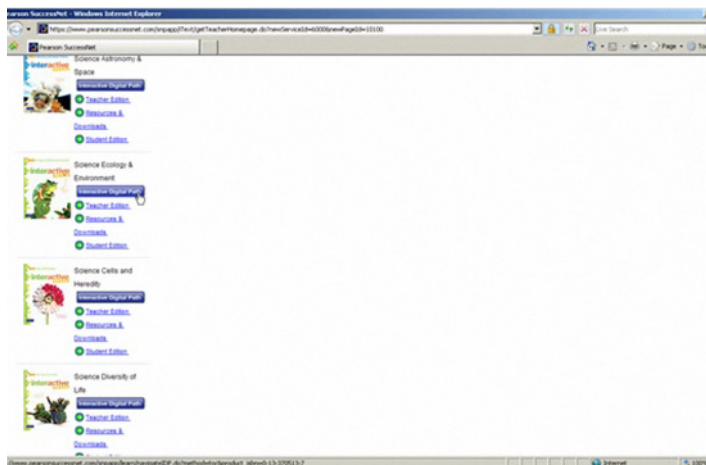
For information on how to get started, view the Getting Started with SuccessNet tutorials that are available on this Web site.

Navigation

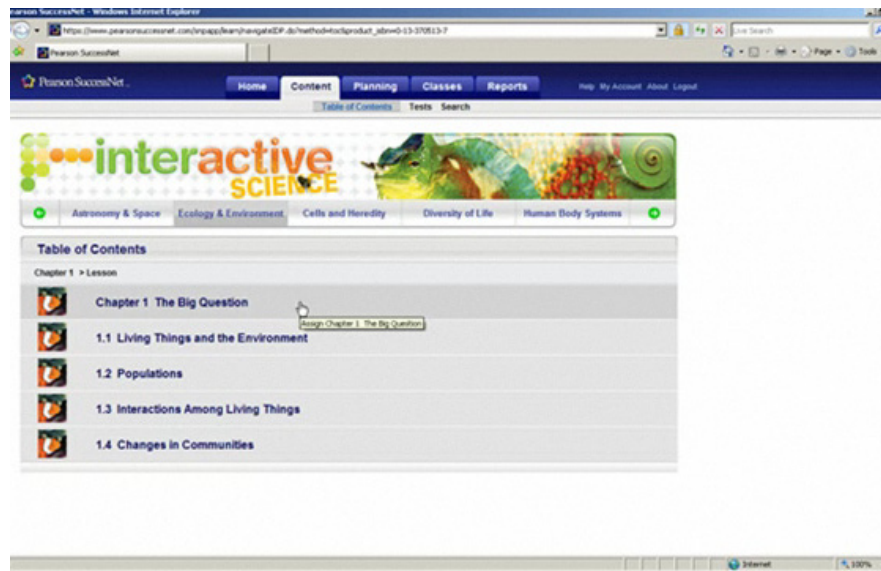
Next, take a look at the Table of Contents and the structure of a chapter in order to find digital content and to see what content is available.

Table of Contents

After teachers log in, they can find and click the Interactive Science module they are teaching.



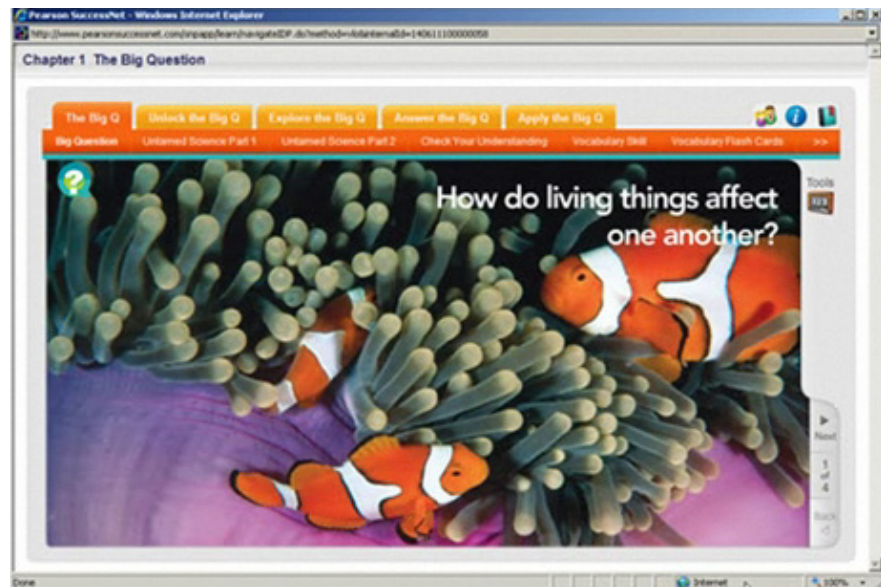
This will take teachers to the Table of Contents for that module. Here, they will be able to browse the chapters and lesson content.



Teachers can click the lesson that they wish to preview, and select **View**.

Big Question

Next, explore the Big Question section and find out how to use this interactive lesson content to launch a chapter. The Big Question helps students set the purpose for the study of the chapter.



Students will revisit the Big Question section several times during the chapter. As students encounter the Big Question icon in their text, they are asked to unlock, explore, answer, and apply the Big Question.

Untamed Science videos are also located in this section. The Untamed Science crew introduces students to the topics they are about to study.

These videos encourage students to become interested and excited to learn the chapter content.

For more information about the Big Question, watch the Understanding by Design tutorial on this Web site.

Lesson

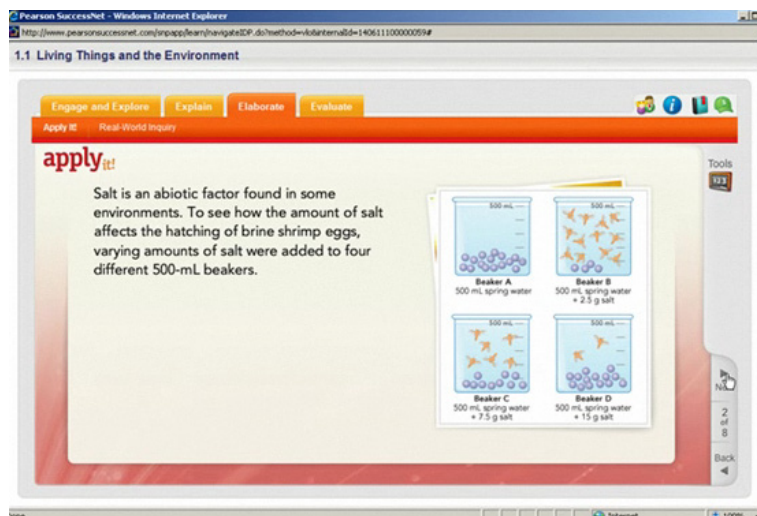
After exploring the Big Question section, learn to navigate a typical lesson. Each lesson is organized by the 5E Learning Cycle: Engage, Explore, Explain, Elaborate, and Evaluate. Under the Engage and Explore tab, students will find My Planet Diary. Here, they can blog about various science concepts or submit their responses to key content questions directly to their teacher.



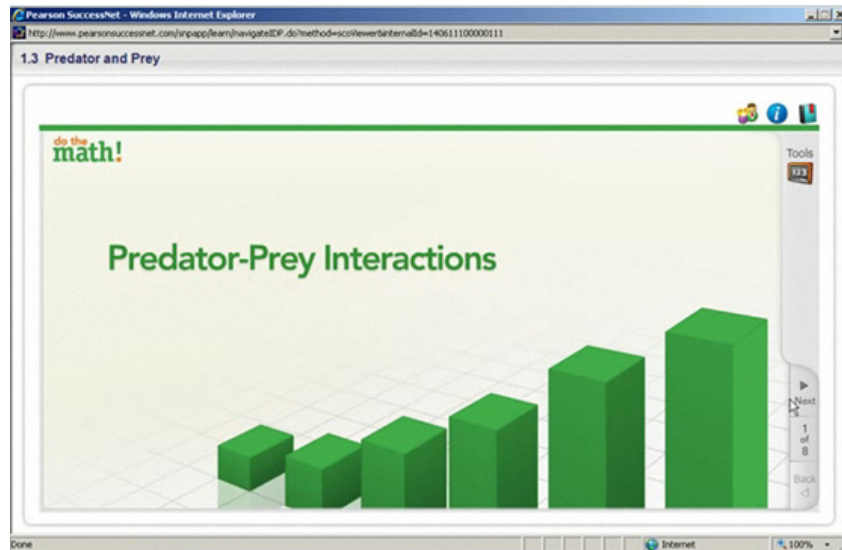
Under the Explain tab, students can dig deeper into science concepts by reading the text and interacting with visuals.

Under Elaborate, teachers will find lesson features such as Apply It!, Do the Math!, and Interactive Art.

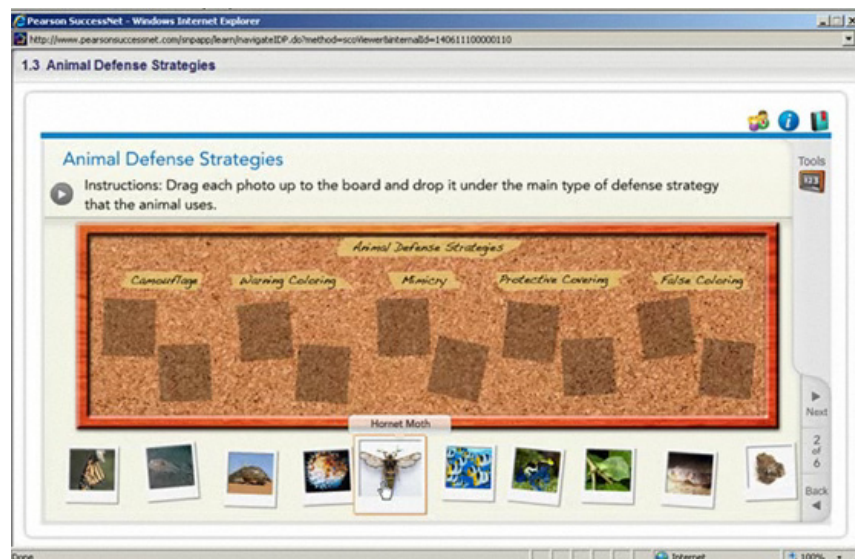
The Apply It! feature allows students to take what they have learned and apply those skills to new situations.



Do the Math! activities help students make important connections between math skills and science content.



Interactive Art simulations let students interact with the science concepts through engaging games that bring the textbook to life.



Under Evaluate, students assess Key Lesson questions. When students complete a quiz, the results are automatically saved and are submitted to the teacher immediately. If a student struggles with the content, they can look for the green baseball cap icon to launch My Science Coach.

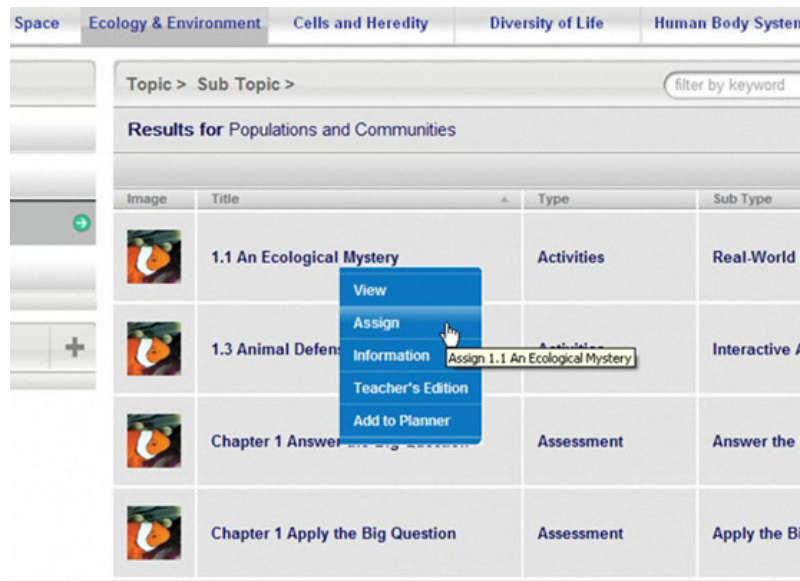
Search Feature

Another way to locate content is to use the Search feature. This feature is located on the Content tab. Teachers can search content by keyword, media type, topic, or standard.

For more information on using online content, visit the SuccessNet Teacher Center: Plan, Teach, Assess tutorials that are available on this Web site.

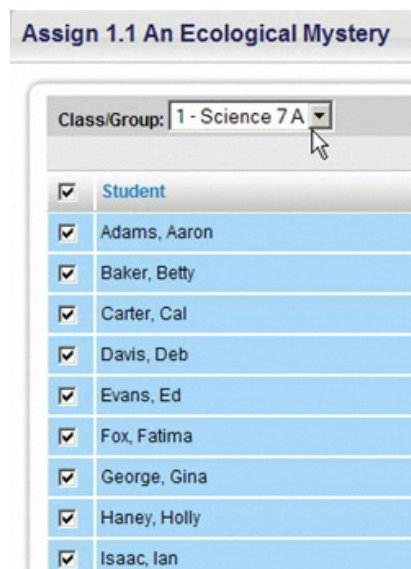
Creating Assignments

To create an assignment, first locate and click on the piece of media to assign. A menu will appear with options that include View and Assign. To assign content, choose Assign and an assignment window will open. First, choose the appropriate class from the drop-down menu in the window.



Next, enter a start and end date for the assignment.

Then, place a check mark next to all of the students to whom the item should be assigned. To create an assignment for the entire class, place the check mark in the box at the top of the column.



Finally, choose Save to create the assignment. Repeat these steps for each class. Now, when students log in, they will see the assignment in their To Do List.

Planning Tab

Teachers can also view and assign content using the Planning tab. Start by using the Preference Navigator.

Preference Navigator

The Preference Navigator will tailor lesson options to individual teaching styles. Teachers may choose Inquiry, Digital, or Blended.

First, select an Interactive Science module from the product drop-down menu.

Next, choose the preference that matches a particular teaching style and click Save. The system then recommends content based on that selected approach.

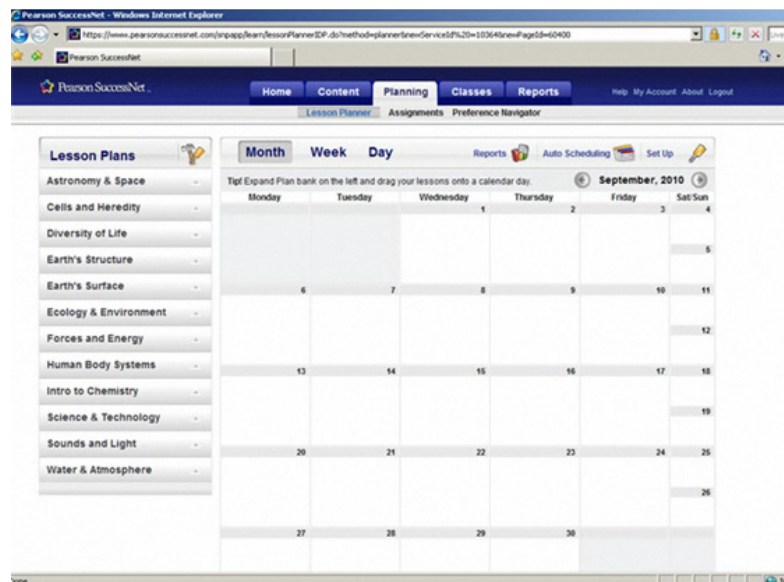
Lesson Planner

Also under the Planning tab, teachers will find the Lesson Planner where they can plan their lessons and assign content. The Lesson Planner offers the flexibility to assign lessons individually or to use the auto-scheduling feature.

For more information on using the Lesson Planner feature, visit the SuccessNet Teacher Center: Plan, Teach Assess tutorials that are available on this Web site.

Once teachers have created their assignments, they can view them by selecting the Planning Tab.

Teachers can also select Lesson Planner to view assignments in a calendar mode.



Assignments

Teachers can view currently assigned activities, by choosing Assignments. Only the assignments that fall between the start and end date will appear on this list.

For more information on planning or assessment, visit the SuccessNet Teacher Center: Plan, Teach, Assess tutorials that are available on this Web site.

Review

This guide explained that teachers can locate content by browsing the online Table of Contents or by using the search feature. Next, it explained how to assign content to classes.

Finally, this guide described how to view the created assignment in the Lesson Planner and Assignment list.

For more information, watch the other Interactive Science tutorials on this Web site.